



Productivity Improvement Solutions

WORK HOLDING SOLUTIONS

AMT SINGLE AND MULTIPLE CLAMPING SYSTEM



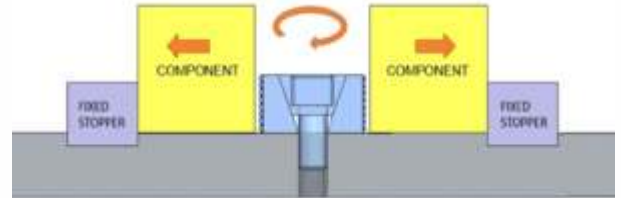
Quality Creates Trust...



LOW PROFILE WEDGE CLAMP

WORKING PRINCIPLE

Wedge clamp functions on the principle that it expands as cap screw is tightened down which moves centre clamping wedge downwards and simultaneously both jaws slide outwards and clamp the work piece firmly. Tightening and loosening of cap screw will return the centre clamping wedge over an internal return spring to its original position so the clamping method is very effective and time saving



APPLICATION ▪ Generic & dedicated fixturing for VMC, HMC & 5 axis machines. ▪ For designing fixtures for inspection & quality labs.

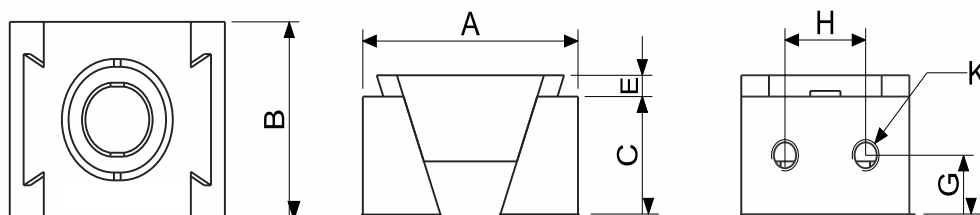
PRODUCT FEATURES

- Tool grade steel body.
- Hardened with electroless nickel plating.
- Expands evenly and apply balanced workholding pressure.
- Free tool access to the workpiece.
- Cross wedge structured design clamps workpiece firmly.
- Light in weight with quick setup time.
- Ideal for multiple clamping but also suitable for individual clamping.
- Chip free design (Internal return springs).

WEDGE CLAMP WITH STANDARD JAWS (KD-STJ)

TECHNICAL SPECIFICATIONS

Wedge clamp is provided with smooth clamping face & fastening screw thread M4 is provided to accommodate various additional customized jaws to workpiece geometry.

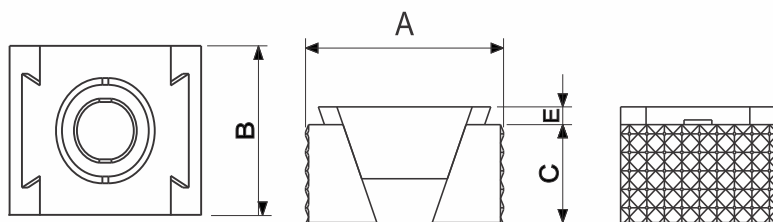


MODEL	A			B	C	E	G	H	K	CLAMPING SCREW (DIN 912)	TIGHTENING TORQUE (Nm)	CLAMPING FORCE (KN)	WEIGHT (gm)
	MIN	MEAN	MAX										
KD-STJ-1	32	34	36	25	15	2.5	7.5	12	4XM4	M8	20	15	70
KD-STJ-2	42	45	49	30	23	4.3	11.5	12	4XM5	M12	65	30	165
KD-STJ-3	56	60	64	40	30	5	15	24	4XM6	M16	120	50	390

WEDGE CLAMP WITH SERRATED JAWS (KD-SJ)

TECHNICAL SPECIFICATIONS

Wedge clamp with serrated jaws is a special purpose clamp. Serrations on both sides of the jaws hold workpiece firmly in any condition as they create high friction.



MODEL	A			B	C	E	CLAMPING SCREW (DIN 912)	TIGHTENING TORQUE (Nm)	CLAMPING FORCE (KN)	WEIGHT (gm)
	MIN	MEAN	MAX							
KD-SJ-1	32	34	36	25	15	2.5	M8	20	15	70
KD-SJ-2	42	45	49	30	23	4.3	M12	65	30	165
KD-SJ-3	56	60	64	40	30	5	M16	120	50	390

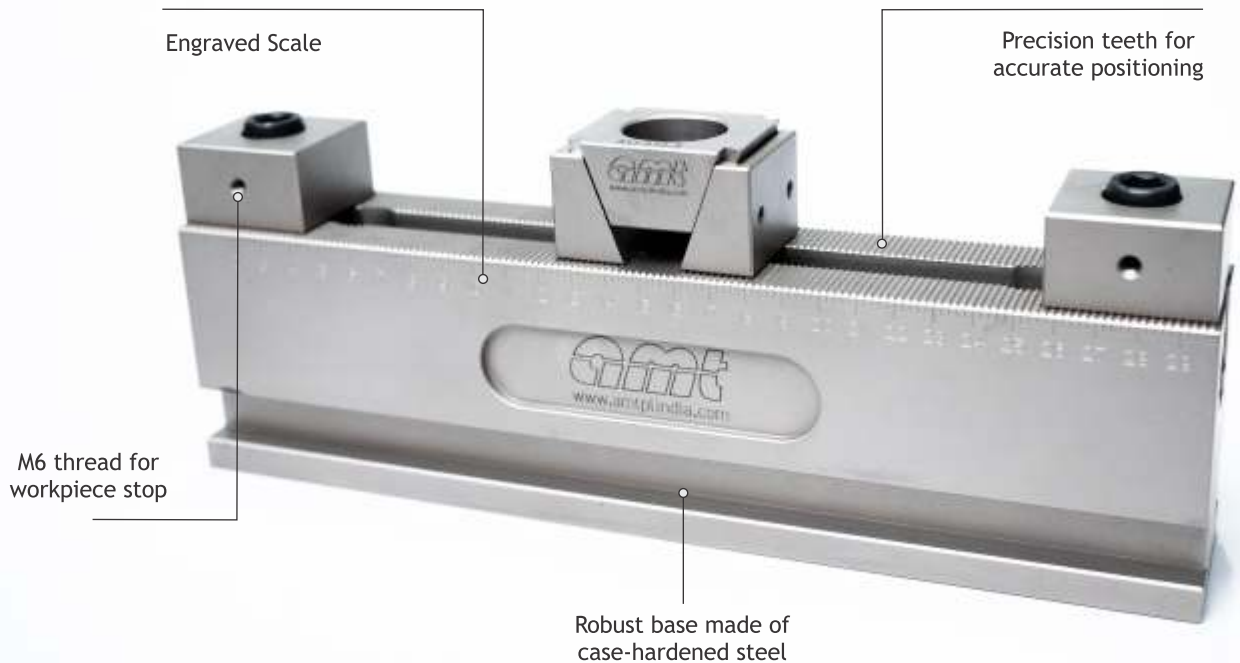
AMT RAIL VICE

APPLICATION

AMT Rail vice features a range of components that are suitable for clamping different work piece types, sizes and materials on all types of work holding platforms and machining centers.

PRODUCT FEATURES

- AMT Rail vices are highly flexible, and they quickly and easily clamp multiple small or large work pieces.
- Can be used on VMC/4th axis/HMC machine-for efficient precision machining
- Horizontal installation - great variability and flexibility
- Modularly constructed clamping system, which has its advantages in the versatile application possibilities.
- Through use of a wide array of fixed jaws and wedge clamps, this clamping system is adapted to your needs.
- Riser blocks/parallels. These are used to lift up the workpiece from base.
- Reproducible clamping forces are achieved using a torque wrench.
- Reproducible clamping range is achieved using scale.



RAIL VICE BODY

APPLICATION

- Optionally designed for one or more workpieces.
- For rapid clamping of work pieces for machine processing. Through use of a wide array of fixed stops and wedge clamps, this clamping system is adapted to your needs.

PRODUCT FEATURES

- Alloy steel body & case hardened 58 to 62 HRC.
- Excellent ease of operation guarantees optimal handling for every application
- Fast adjustment for clamping range pre-setting through precision scale marking.
- Accurate positioning and alignment because of the rack teeth provided on both the body and the fix jaws.
- Rack teeth pitch accuracies (± 0.02 mm).
- Operation with the Allen key.



FIXED CLAMPING JAW WITH STANDARD & SERRATED SURFACE

APPLICATION

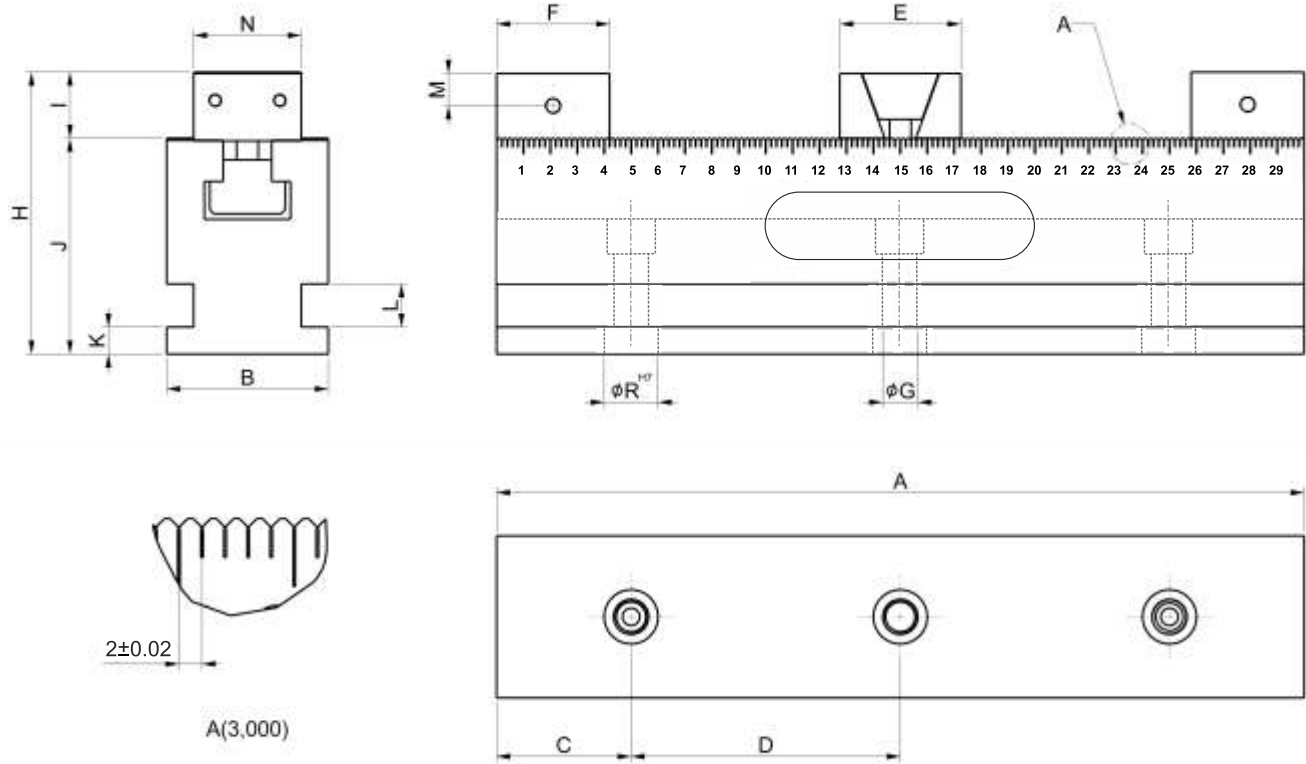
The fixed stop is positioned on the clamping rail via the tightening bolt and grips, positively interlocked, on the 2 mm serration. Workpieces can be positioned and clamped with great clamping force.

PRODUCT FEATURES

- Alloy steel body & case hardened 58 to 62 HRC.
- Excellent ease of operation guarantees optimal handling for every application.
- Provision to fix workpiece stop.



TECHNICAL SPECIFICATIONS



MODEL	A	B+/-0.05	C	D+/-0.01	E	F	G	H	I	J	K	L	M	N	R
KD-STJ-2 RL-300	300	60	50	100	42	42	13	105	24.5	80	10	16	12	40	20
KD-SJ-2 RL-300	300	60	50	100	42	42	13	105	24.5	80	10	16	12	40	20
KD-STJ-3 RL-500	500	60	50	200	60	42	13	105	24.5	80	10	16	12	40	20
KD-SJ-3 RL-500	500	60	50	200	60	42	13	105	24.5	80	10	16	12	40	20

AMT RAIL VICE ACCESSORIES

STEP JAW

Suitable for through machining.
Maximum tool access to the work piece.

WORK PIECE STOPPER

Lateral stop for positioning work pieces.
Stop is screwed to the fixed jaw and can be moved.

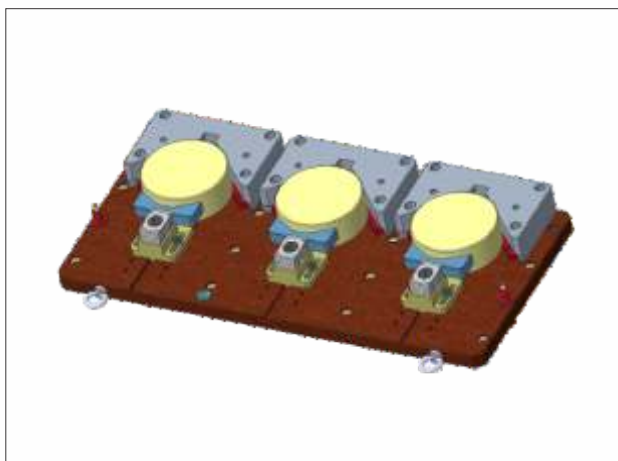
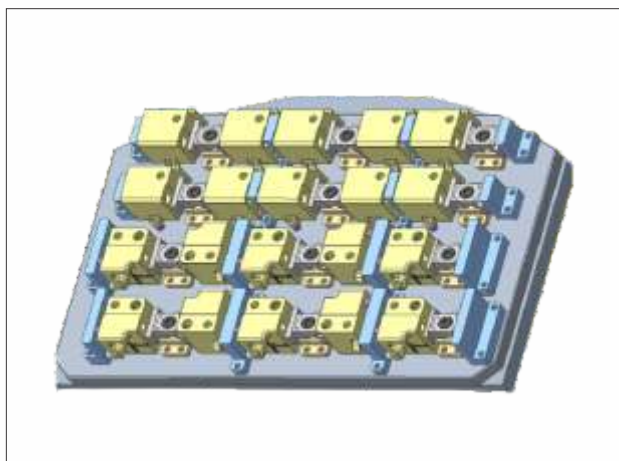
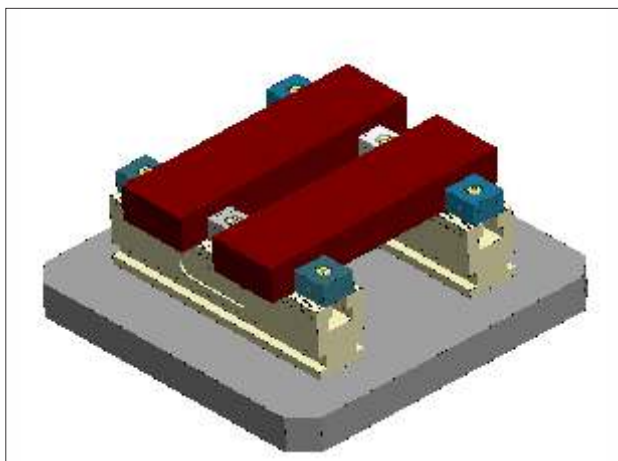
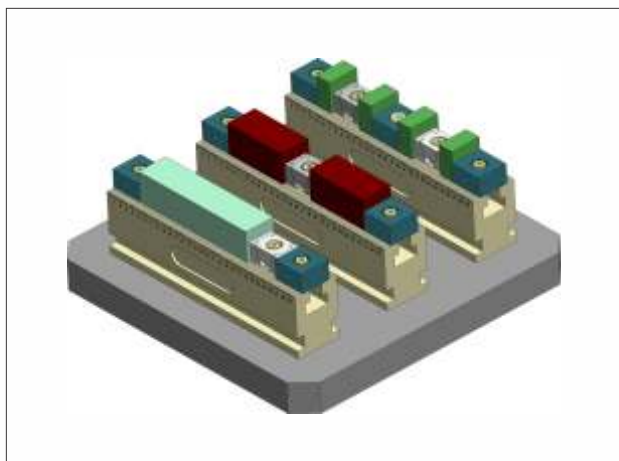
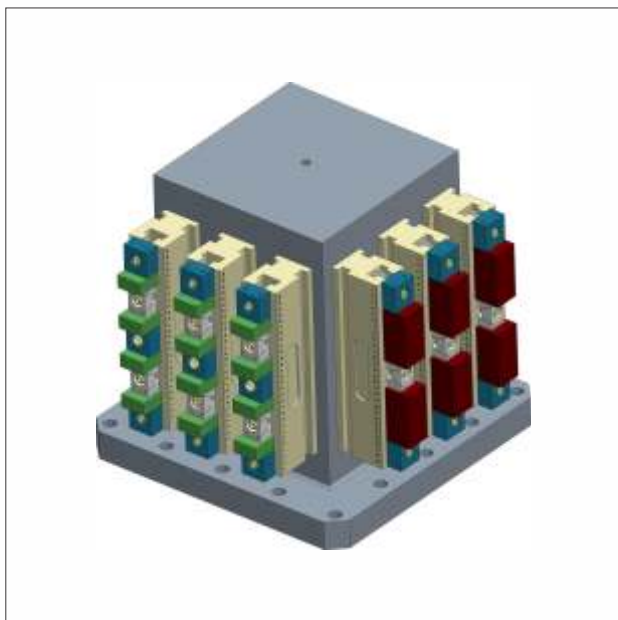
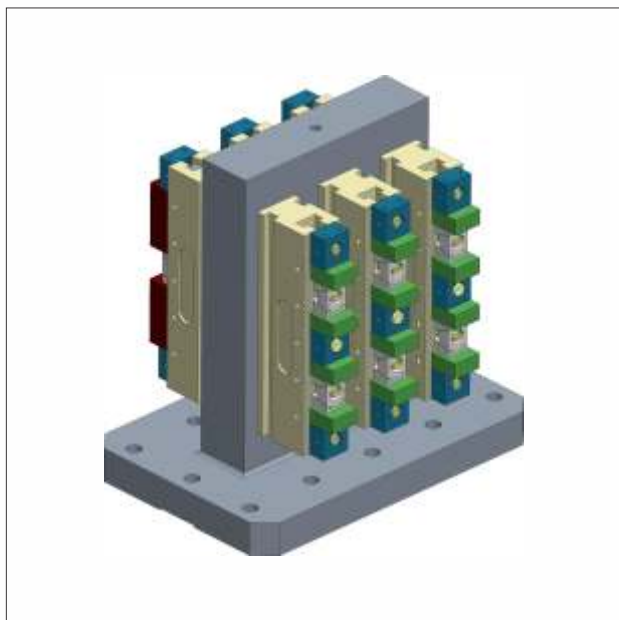
POSITIONING BUSH

For Precision positioning & quick aligning
Hardened & ground

SIDE CLAMP

For mounting of the clamping rail on the machine table with slots.

APPLICATION IMAGES





Productivity Improvement Solutions

MANUFACTURED BY



Productivity Improvement Solutions

Marketed By

SEALING TECH INC

34,35 , Kamarajar Salai Main Road ,
TASS Industrial Estate, Ambattur ,
Chennai -600098

Ph : 044-26250336,24961336,7200073285

Email : mail@sealingtech.in , sealingtech@gmail.com

Web: www.sealingtech.in